

APPENDIX G
Coliform Monitoring Plan

CITY OF SEQUIM COLIFORM MONITORING PLAN

WATER SYSTEM DESCRIPTION

The City of Sequim Washington State Department of Health (DOH) water system identification number is 77620-Y. The City's current mailing address is:

City of Sequim
152 W. Cedar St.
Sequim, WA 98382-3317

The City of Sequim water system serves a portion of the incorporated City of Sequim and a portion of unincorporated land north of the City boundary on Sequim Avenue. The City water system service area population is between 3,500 and 4,500 and the system serves approximately 1,300 connections.

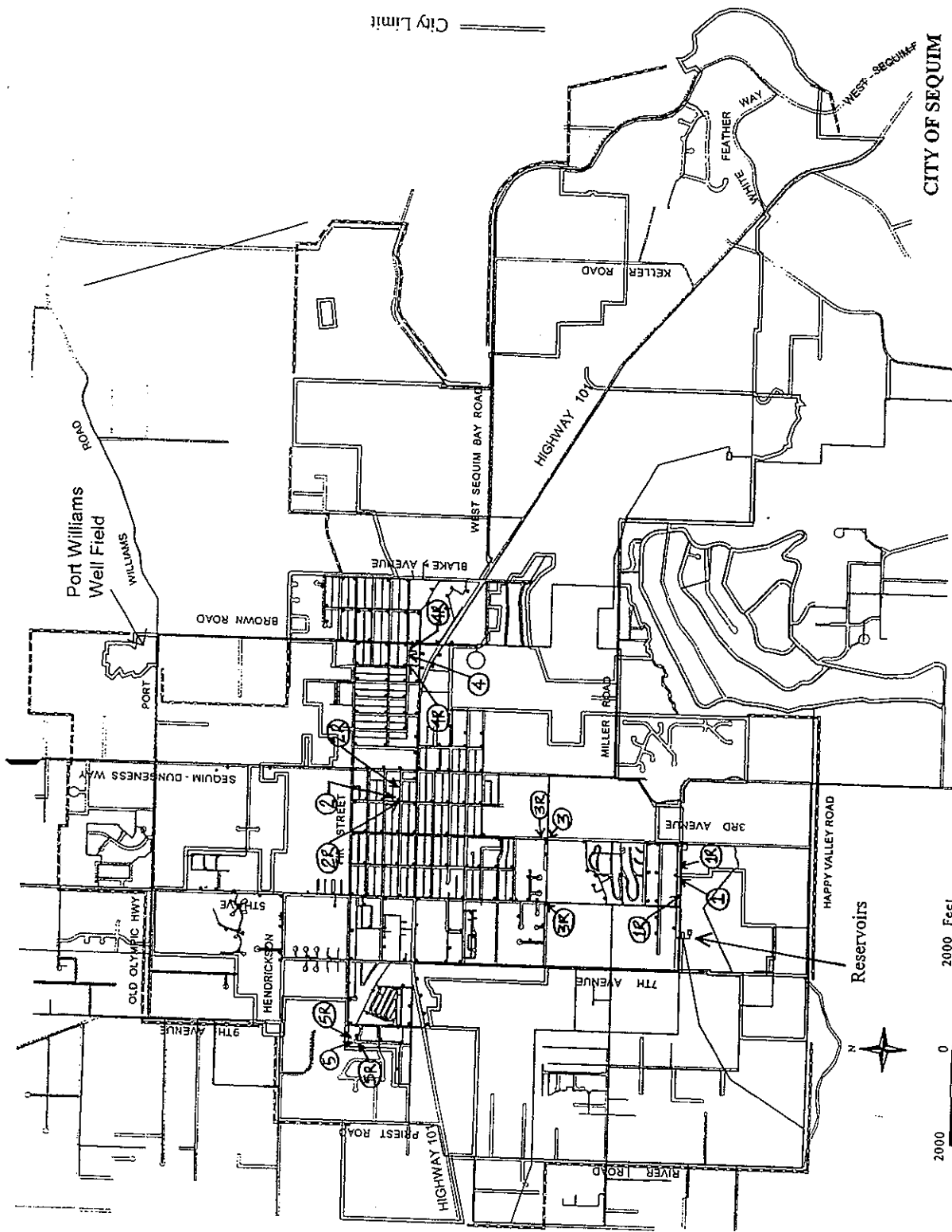
The City has three sources of water which include an infiltration gallery at the Dungeness River, the Silberhorn well field, and the Port Williams well field. Three reservoirs provide storage for the water system: a 0.5 MG concrete reservoir, a 1.7 MG steel reservoir, and a 0.2 MG steel reservoir. The infiltration gallery, the Silberhorn well field and the 0.5 MG reservoir are all gas chlorinated. The Port Williams well field has sodium hypochlorite injection and the 1.7 MG steel reservoir has equipment for sodium hypochlorite injection. The 0.5 MG and 1.7 MG gallon reservoirs provide storage for the low-middle pressure zone, and the 0.2 MG reservoir provides storage for the high pressure zone. The Silberhorn well field and the infiltration gallery feed the low pressure zone reservoirs. The Port Williams well field can fill the reservoirs through the booster station at 5th Ave. and McCurdy Rd. Water is pumped from the 0.5 MG and 1.7 MG reservoirs to the 0.2 MG reservoir, which feeds the high pressure zone by gravity. Two PRVs allow flow from the high pressure zone to the low pressure zone.

COLIFORM SAMPLE COLLECTION SITE LOCATIONS AND SCHEDULE

The City of Sequim is required to take four (4) routine coliform samples per month. Currently, five (5) routine coliform samples are taken at the following sites on the first and third Tuesday of each month. If coliform are present in any sample, repeat samples must be collected, in accordance with WAC 246-290-320. Repeat samples, if necessary, are taken at the following locations. A map showing the routine and repeat sample locations is attached.

Routine: (1) 308 Reservoir Rd.
Repeat: (1R) 308 Reservoir Rd
 (1R) 306 Reservoir
 (1R) 310 Reservoir

City Limit
 Urban Growth Area (UGA) Boundary



CITY OF SEQUIM

COLIFORM SAMPLING LOCATIONS

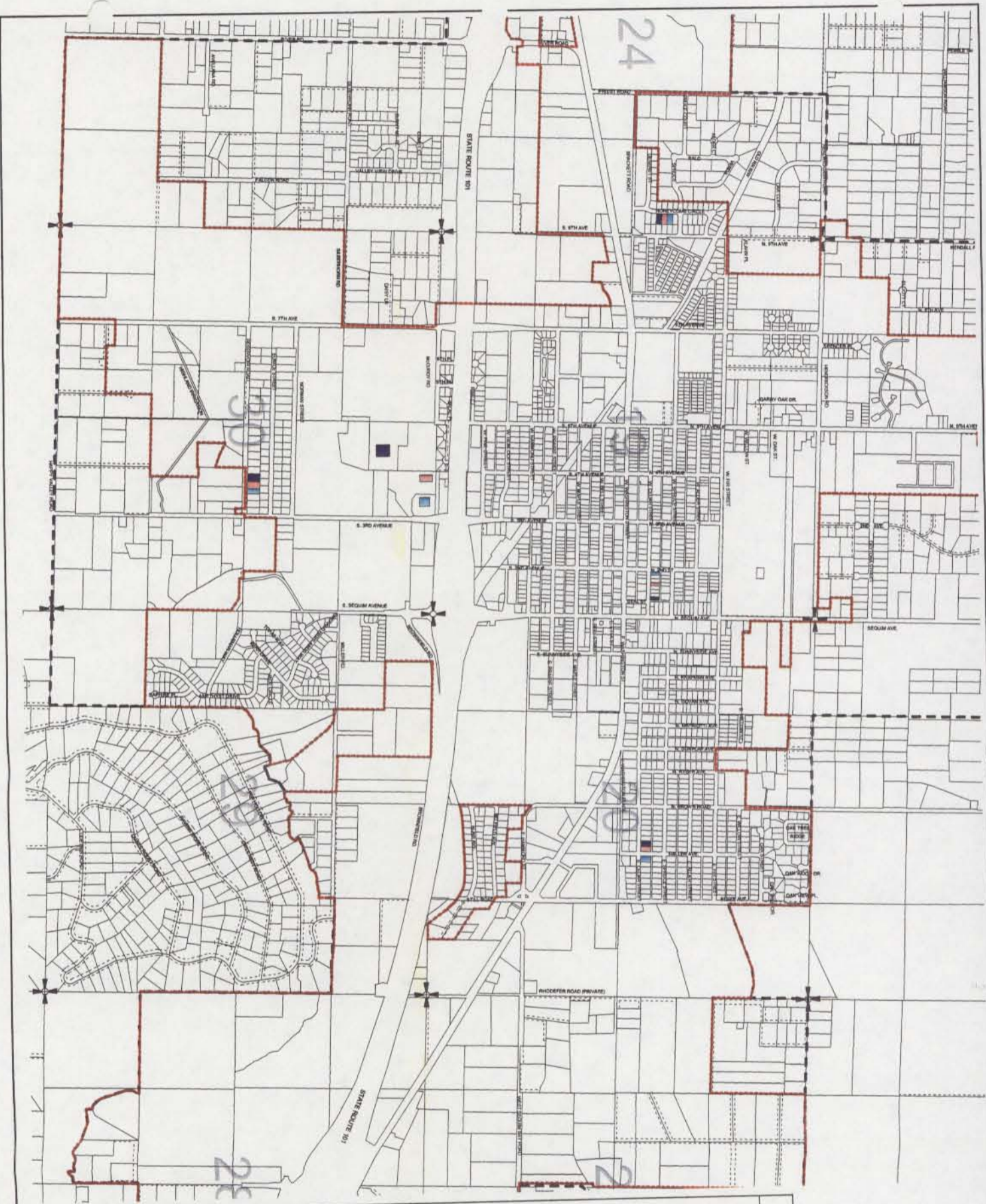
LEGEND

- ① Routine Sample Location
- ①R Repeat Sample Location

Silberhorn Well Field

Reservoirs





COLIFORM MONITORING SITES

- **PRIMARY SAMPLING SITES**
 - 308 Reservoir Road
 - 152 W. Cedar (City Hall)
 - 921 S. 3rd. (Mobile Home Park)
 - 204 Honeycomb Circle
 - 872 E. Cedar
- **DOWNSTREAM REPEAT SITES**
 - 306 Reservoir Road
 - 190 W. Cedar (Community Center)
 - 911 S. 3rd. (Old Sequim Lumber)
 - 208 Honeycomb Circle
 - 902 E. Cedar
- **UPSTREAM REPEAT SITES**
 - 310 Reservoir Road
 - 144 W. Cedar (City Utilities)
 - 1000 S. 5th. (Nursing Home)
 - 200 Honeycomb Circle
 - 862 E. Cedar
- City Limits**
Uga

CITY OF SEQUIM
WATER COMPREHENSIVE PLAN
COLIFORM MONITORING SITES

Gray & Osborne, Inc.
 CONSULTING ENGINEERS

