











E

Scale: 1" = 1,800'

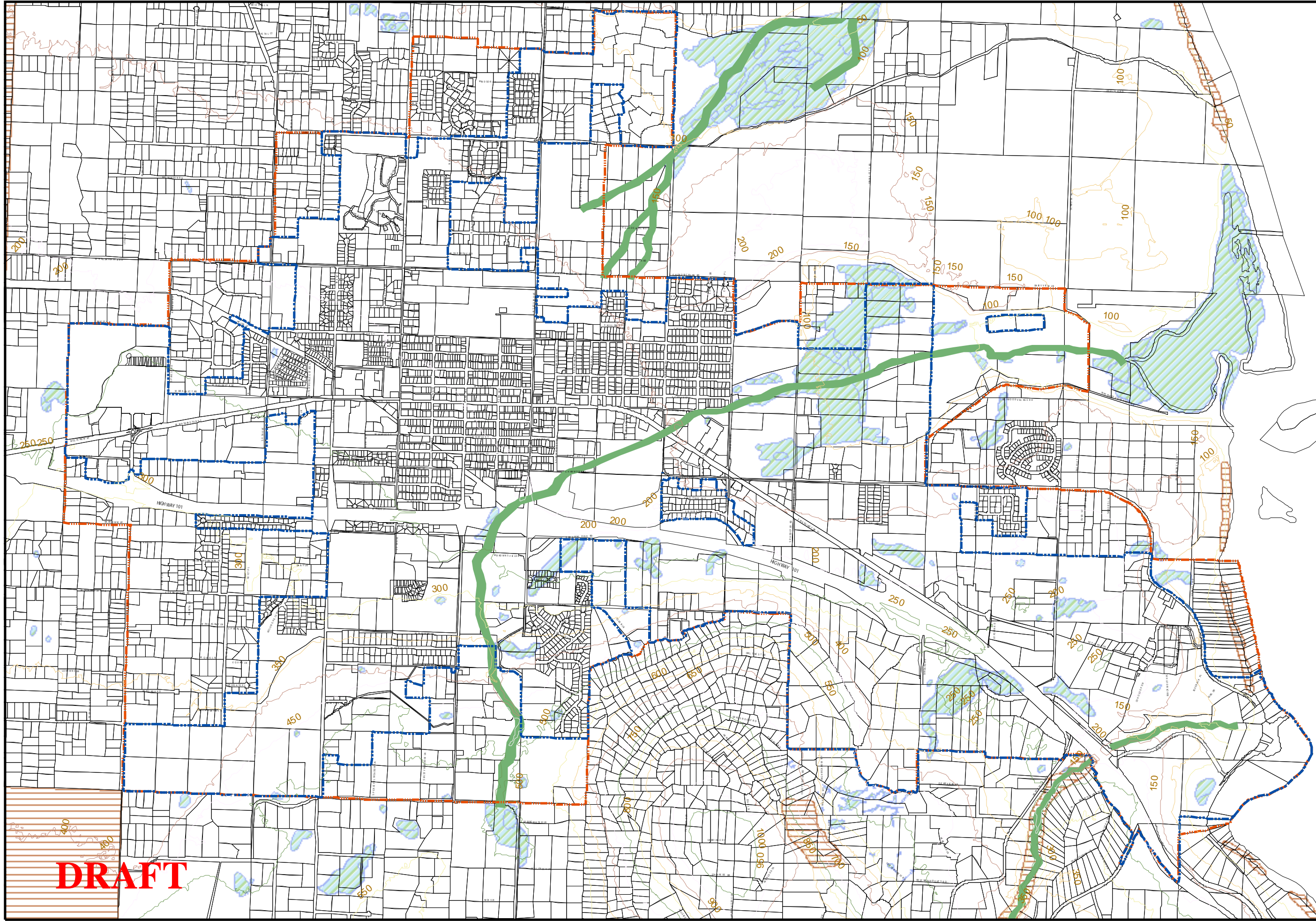
CRITICAL AREA MAP

City of Sequim
152 West Cedar Street
Sequim, WA 98382

-  50 FT CONT
-  City limits
-  UGA
-  WILD CORR
-  CREEK BUFFER
-  WETLAND
-  Buildings
-  PARCEL

Field verification of the accuracy of any information contained in this map is the sole responsibility of the user. Parcel information was obtained from Clallam County. Parcel lines are based on available public records and existing map sources, not from field surveys. Parcel lines have been adjusted to better fit planimetric data. The parcel mapping may contain inaccuracies and should not be relied upon for site-specific analysis, property acquisition, determination of rights-of-way, property dimensions, or land area. No representation of warranty regarding the positional accuracy of any map feature is either expressed or implied by publication of this map. By accepting this map, the user releases the City of Sequim from any and all direct liability for actions or decisions made based on information contained in this map.

REVISION: xxxxxxxx
 REVISION DATE: xxxxxxxx
 ORDINANCE No.: xxxxxxxx
 APPROVED BY: xxxxxxxx
 PRINTED: September 6, 2005



DRAFT